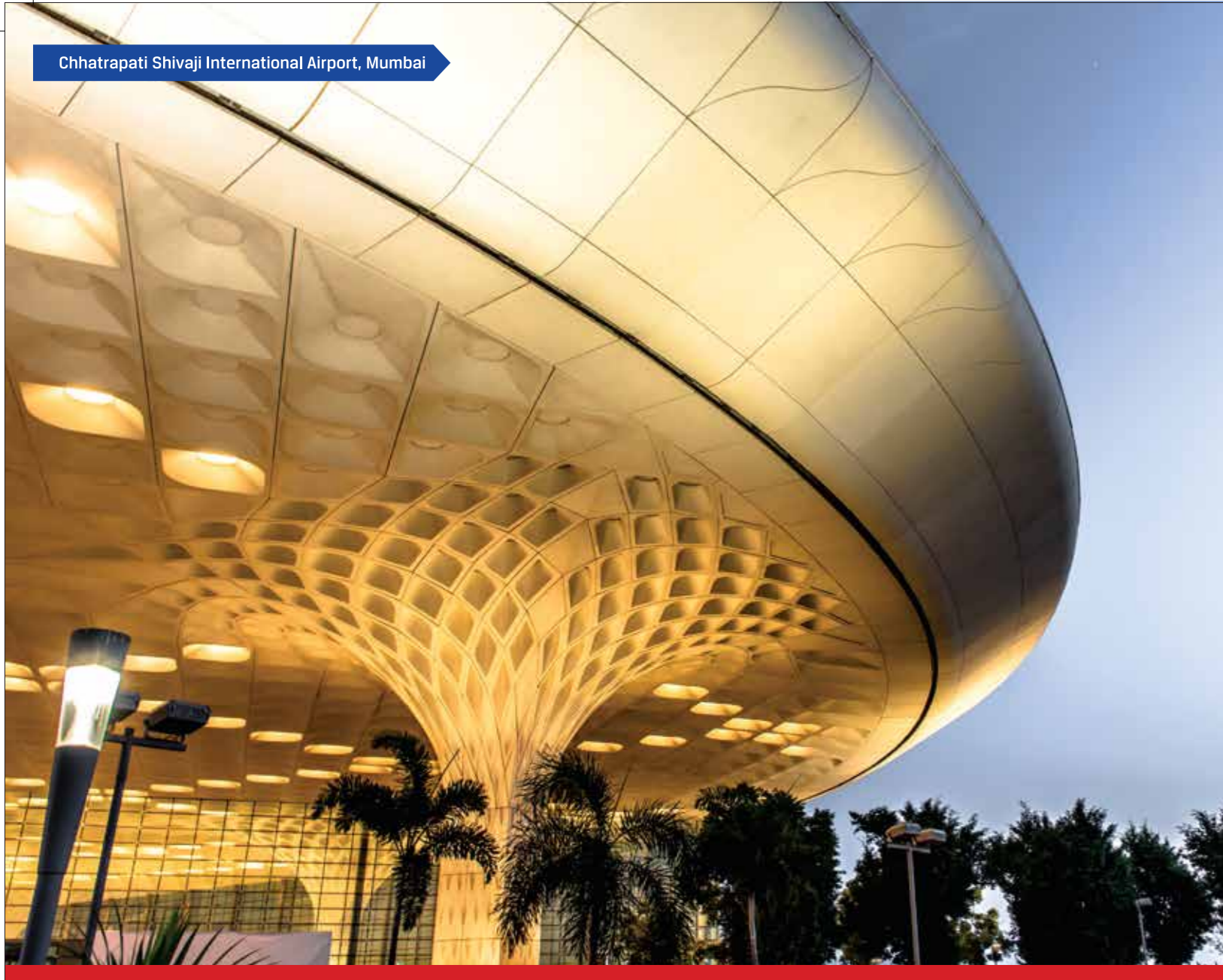


Chhatrapati Shivaji International Airport, Mumbai



The Ultimate Test

JSW Neosteel finds wide applications for general concrete reinforcements in

- Residential Buildings
- Airports and Metro Rail
- Roads, Bridges and Flyovers
- Commercial Complexes
- Dams
- Industrial Structures
- Power Plants

DEALER NAME AND ADDRESS

[Empty dashed box for dealer name and address]



Corporate Offices

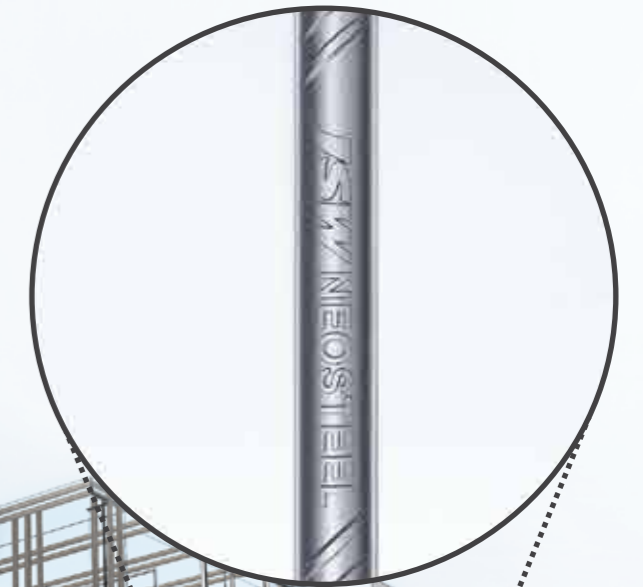
JSW Steel Ltd.
 JSW Centre
 Bandra Kurla Complex, Bandra (East), Mumbai - 400 051
 Tel.: +91 22 - 42861000 | Fax: +91 22 - 42863000
 Website: www.jsw.in
 Toll Free No.: 1800 225 225

www.jswneosteel.in



Pure TMT Bars

Pure Steel.
Pure Mazbooti.

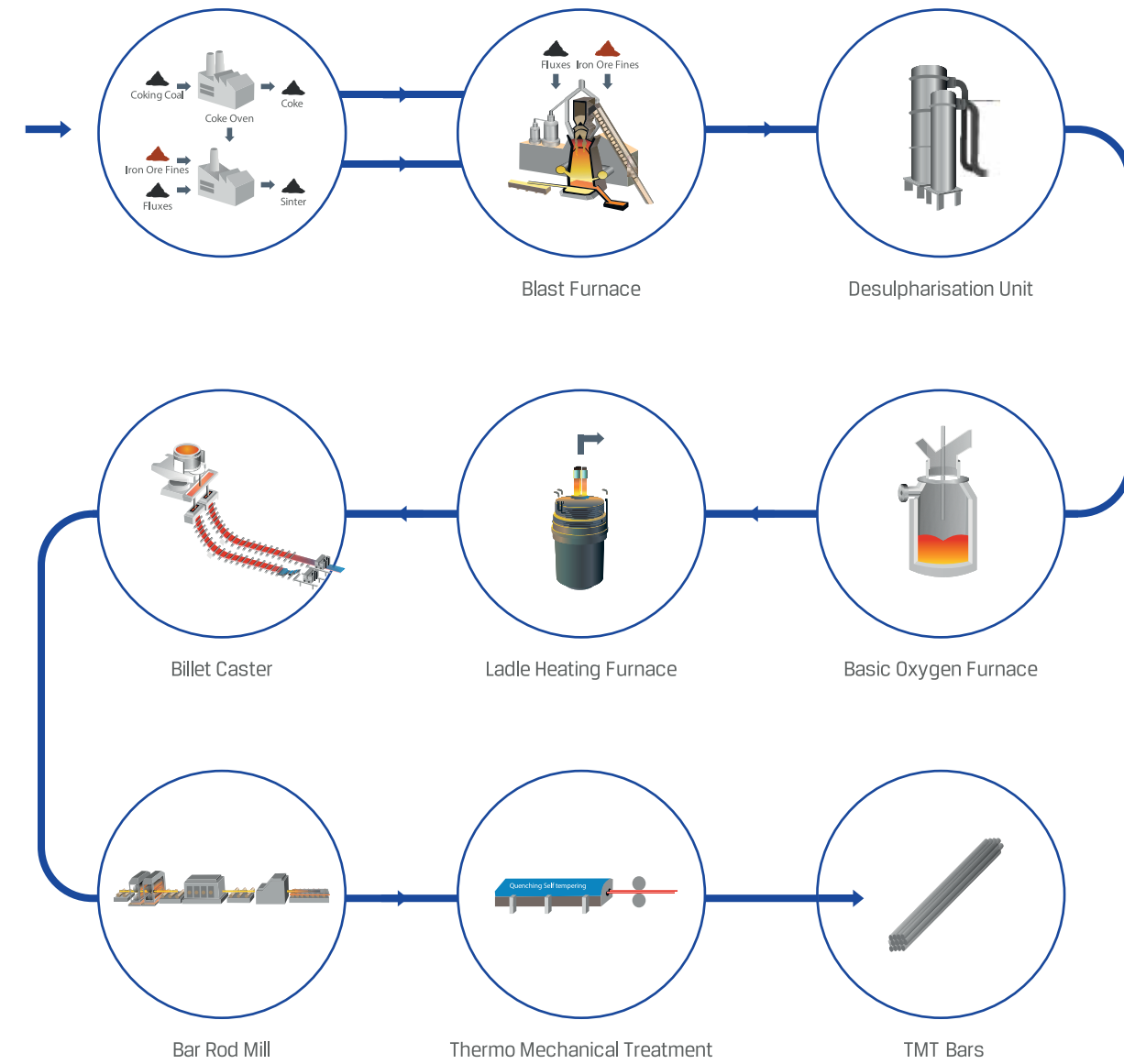


www.jswneosteel.in





Manufacturing Process



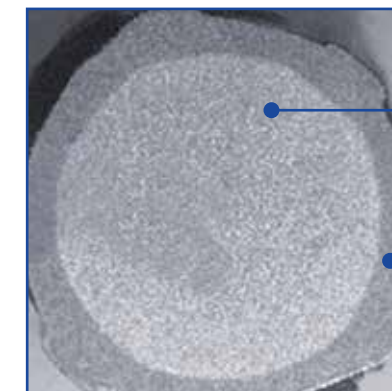
JSW Group

An \$13 billion conglomerate, with presence across India, USA, South America, Italy & Africa, the JSW Group is a part of the O.P. Jindal Group with strong footprints across economic sectors, namely, Steel, Energy, Infrastructure, Cement, Paints also in Ventures and Sports. The Group is paving the way for India's development as a global superpower. JSW Steel is India's leading steel producer and among the world's most illustrious steel company. The Group is also leading in every sector that it operates in.

JSW Steel Ltd.

The flagship company of USD 11 billion JSW Group, JSW Steel is one of India's leading integrated steel manufacturers with a capacity of 18 MTPA. It is one of the fastest growing companies in India with a footprint in over 110 countries. With state-of-the-art manufacturing facilities located in Karnataka, Tamil Nadu, Maharashtra, USA & Italy, it is recognized for its innovation and quality. JSW offers a wide gamut of steel products that includes Hot Rolled, Cold Rolled, Electrical Steel Bare & Pre-painted Galvanized & Galvalume®, TMT Rebars, Wire Rods Special Alloy Steel & Tinplate.

Typical macrostructure of JSW Neosteel



Ferrite and Pearlite Core Result: Tough Surface and strong fine-grain core

Tempered Martensite Surface Layer

Advantages of JSW Neosteel



Highest level of purity

Manufactured from iron Ore, our TMT bars have the highest grade of purity and lowest sulphur and phosphorous content, making it strong.



Anti-Corrosive

Unique & uniform microstructure due to HYQST technology that gives higher corrosion resistance



Best bonding with Cement

Well-defined ribs that exceed the standard Ar value specifications, ensuring best bonding with cement.

Easy Bendability

JSW Neosteel can be bent into customized shape in spite of having very high strength due to its inherent microstructure with soft ferrite and pearlite core.



Earthquake Resistant

Excellent combination of strength, bendability, ductility and fatigue resistance is the best match for earthquake prone zones



Higher Fatigue Resistance

JSW Neosteel is excellent in cyclic loading situations due to uniform & critically designed rib pattern



Easy Weldability

Provides excellent weldability due to low carbon content.

Green Steel

Plant with zero effluent discharge.



TECHNICAL SPECIFICATIONS

JSW NEOSTEEL Pure TMT Bars are made in grades designated as Fe 500D, Fe 500D CRS, Fe 550D, & Fe-600 as per IS : 1786-2008 for concrete

Chemical Composition	C%	P%	S%	CE%
JSW NEOSTEEL Fe 500D	0.20-0.23.	0.030 max.	0.030 max.	0.50 max.
JSW NEOSTEEL Fe 500D CRS	0.14 max.	0.10 max.	0.030 max.	0.50 max.
JSW NEOSTEEL Fe 550D	0.21 - 0.24	0.030 max.	0.030 max.	0.50 max.
JSW NEOSTEEL Fe 600	0.28 max.	0.030 max.	0.030 max.	0.50 max.
ISI786 Fe 500D	0.25 max.	0.040 max.	0.040 max.	0.50 max.
ISI786 Fe 500D CRS	0.15 max.	0.12 max.	0.040 max.	0.50 max.
ISI786 Fe 550D	0.25 max.	0.040 max.	0.040 max.	0.50 max.
ISI786 Fe 600	0.3 max.	0.040 max.	0.040 max.	0.50 max.

*Typical values for 95% of heat

Mechanical Properties	YS N/mm2	UTS N/mm2	UTS/YS Ratio	% El	% T El
JSW NEOSTEEL Fe 500D	530 min.	600 min.	1.10 min.	16 min.	5 min.
JSW NEOSTEEL Fe 500D CRS	530 min.	600 min.	1.10 min.	16 min.	5 min.
JSW NEOSTEEL Fe 550D	580 min.	620 min.	1.06 min.	15 min.	5 min.
JSW NEOSTEEL Fe 600	620 min.	680 min.	1.06 min.	11 min.	-
ISI786 Fe 500D	500 min.	565 min.	1.10 min.	16 min.	5 min.
ISI786 Fe 500D CRS	500 min.	565 min.	1.10 min.	16 min.	5 min.
ISI786 Fe 550D	550 min.	600 min.	1.06 min.	14.5 min.	5 min.
ISI786 Fe 600	600 min.	660 min.	1.06 min.	10 min.	-

*Typical values for 95% of heat

Bend Properties	Mandrel Diameter Upto and including 20 mm		Mandrel Diameter Over 20 mm	
JSW NEOSTEEL Fe 500D		3D		4D
JSW NEOSTEEL Fe 500D CRS		3D		4D
JSW NEOSTEEL Fe 550D		4D		5D
JSW NEOSTEEL Fe 600		5D		6D
ISI786 Fe 500D		3D		4D
ISI786 Fe 500D CRS		3D		4D
ISI786 Fe 550D		4D		5D
ISI786 Fe 600		5D		6D

*d: nominal size of test piece in mm

Re-bend Properties	Mandrel Diameter Upto and including 10 mm		Mandrel Diameter Over 10 mm	
JSW NEOSTEEL Fe 500D		4D		6D
JSW NEOSTEEL Fe 500D CRS		4D		6D
JSW NEOSTEEL Fe 550D		6D		7D
JSW NEOSTEEL Fe 600		7D		9D
ISI786 Fe 500D		4D		6D
ISI786 Fe 500D CRS		4D		6D
ISI786 Fe 550D		6D		7D
ISI786 Fe 600		7D		9D

*d: nominal size of test piece in mm

Product Range and Nominal Weight			
Nominal size (mm)	Weight per meter (kg)	Nominal size (mm)	Weight per meter (kg)
8	0.395	25	3.85
10	0.617	28	4.83
12	0.888	32	6.31
16	1.58	36	7.99
20	2.47	40	9.86

*Supplies will be in line with weight tolerances as per IS1786-2008

JSW Neosteel Mega projects



Eastern Freeway, Mumbai



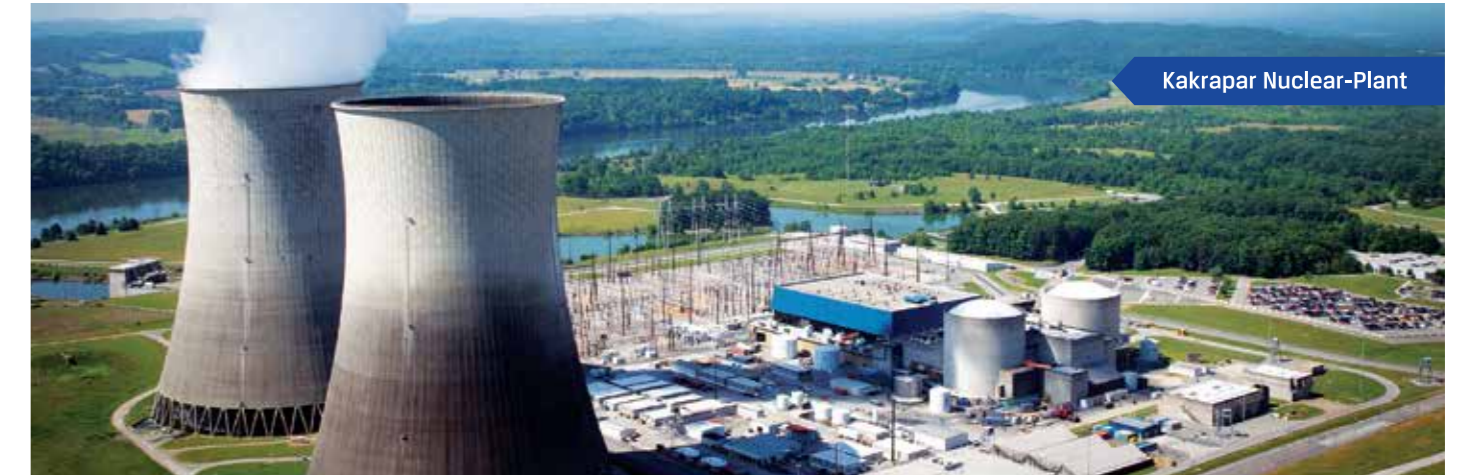
Yamuna Expressway



Indira Gandhi International Airport, Terminal 3, Delhi



Infosys, Bengaluru



Kakrapar Nuclear-Plant



Metro Projects - Delhi, Chennai, Hyderabad, Kolkata, Lucknow, Kochi



Bandra Worli Sea



V.O.Chidambaranar Port, Tuticorin, Tamil Nadu